



SINGING WIND PARK MASTER PLAN

PARKS & RECREATION ADVISORY BOARD

JUNE 23, 2022

KERRVILLE-SCHREINER PARK RECREATION HALL





Singing Wind Park Master Plan

Current Uses and Facilities (100 acre park)






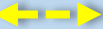

- 1 Playground
- 2 Ballfields
- 3 Skatepark
- 4 Olympic Pool
- 5 Trails
- 6 Maintenance storage
- P Parking

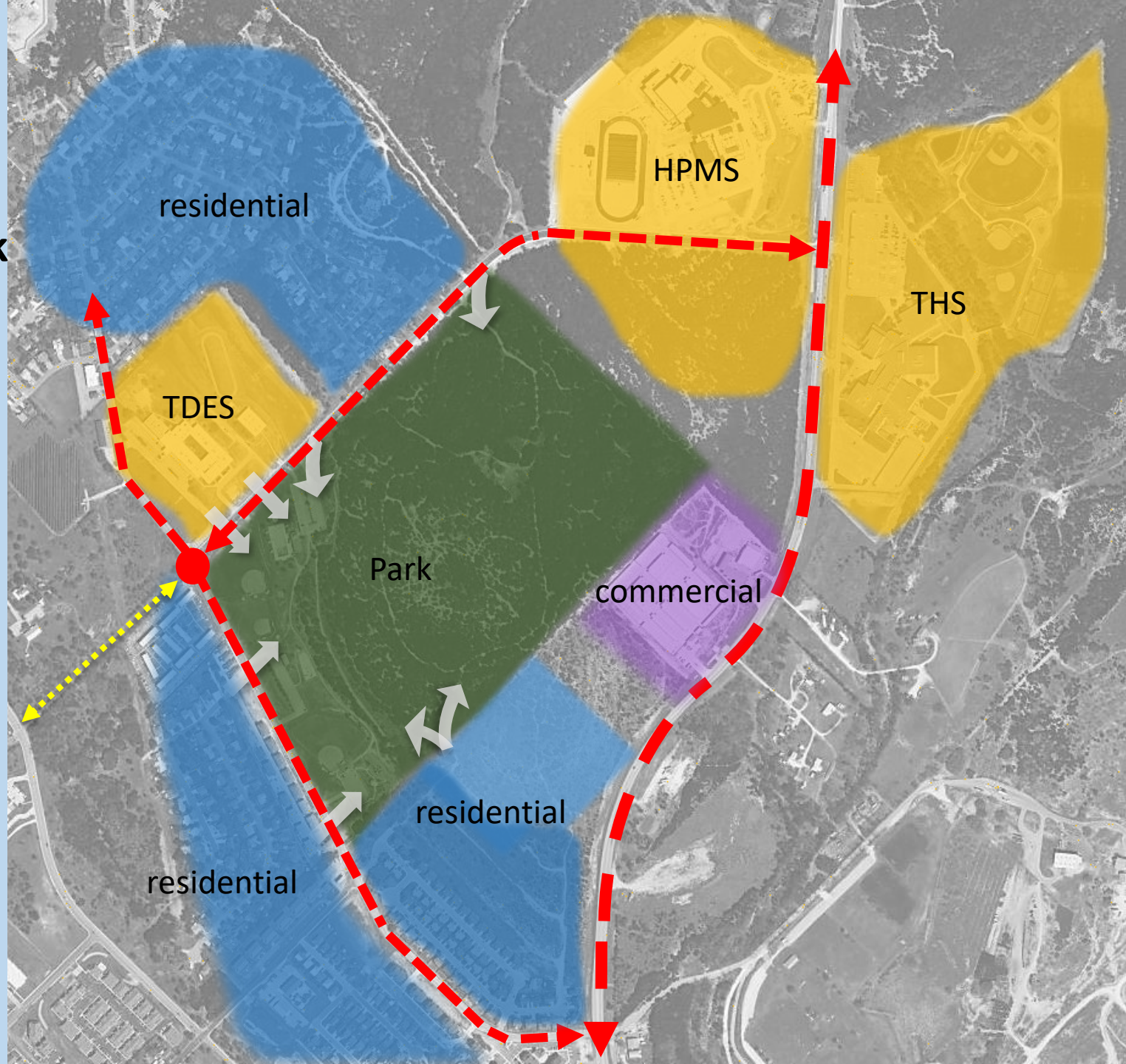
↔ vehicular traffic



Singing Wind Park

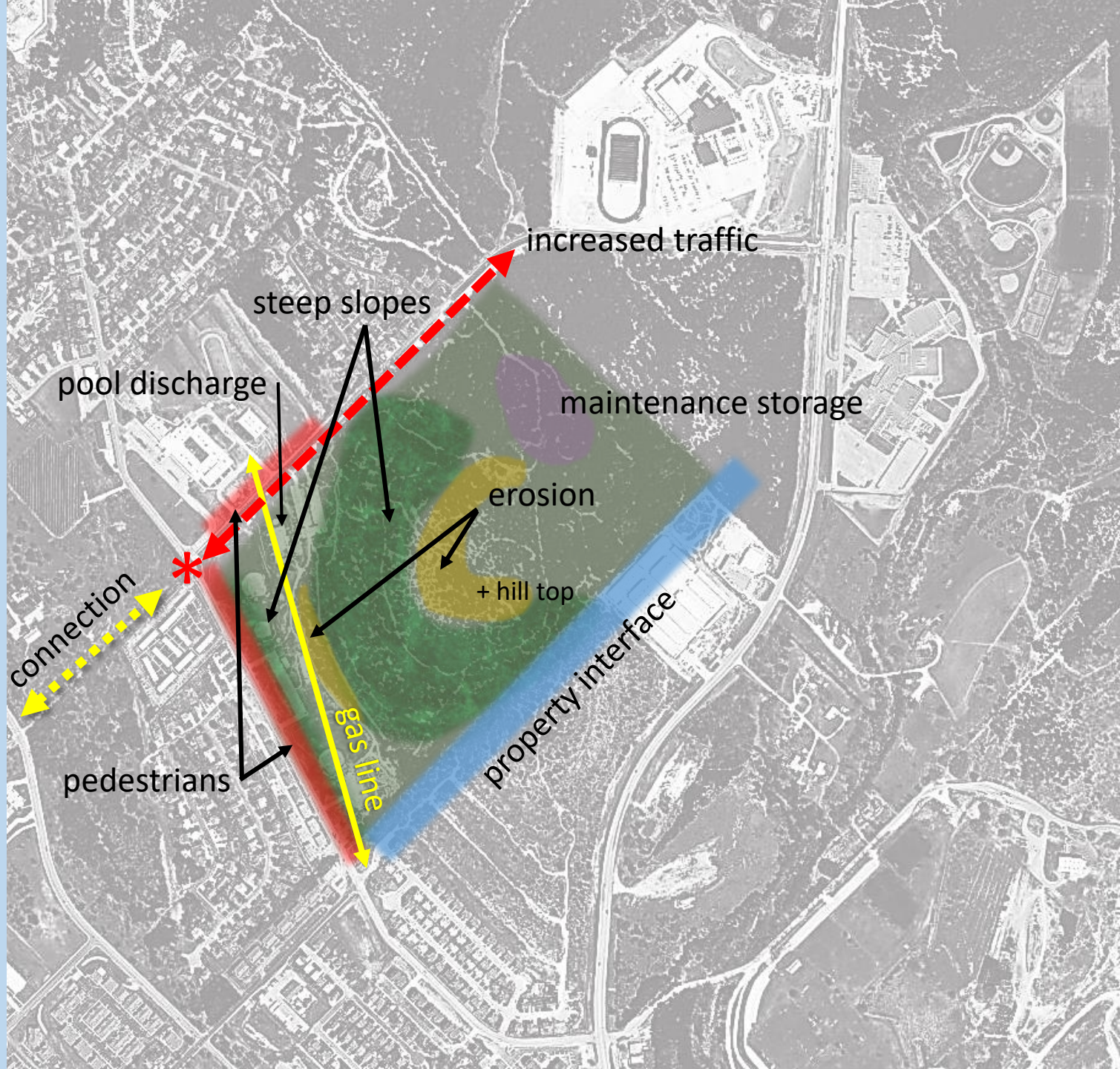
Surrounding Land Use and Traffic Patterns

-  Singing Wind Park
-  school sites
-  residential
-  commercial
-  vehicular traffic
-  vehicular traffic; possible River Trail connection (future)
-  pedestrian traffic



Site Challenges

- diverging park interests
- expanding area development and traffic conflicts
- existing gas main/possible relocation
- erosion/trail use
- facility repurposing
- alternative locations for park uses
- park development cost



Utilities
Around Site



Singing Wind Park

Existing Conditions



Singing Wind Park

Existing Conditions



Singing Wind Park

Existing Conditions



Singing Wind Park

Existing Conditions



Singing Wind Park

Existing Conditions



Singing Wind Park

Existing Conditions



Singing Wind Park

Existing Conditions



Singing Wind Park

Existing Conditions



Singing Wind Park

Existing Conditions



Singing Wind Park

Existing Conditions



2022 PARKS AND RECREATION MASTER PLAN

Specific Recommendations for Singing Wind Park:

- Develop Singing Wind Park Master Plan
- Repurpose lit softball fields – consider dog park, pump track, disc golf, BMX track, etc.
- Enhance / expand skate park; upgrade skate park lighting
- Add trail benches to backside of park
- Add on-street parking to Olympic Drive
- Consider additional park entrance – Olympic Dr. and Loop 534 area (parking / trail access)
- Develop as a “bike park” with multiple features; add “flow” mountain bike trail
- Olympic Pool – address short term maintenance and code issues
- Develop Olympic Pool Feasibility Study findings (heat pool, update diving area, add competitive swim and lap swimming features, use solar power)

2022 PARKS AND RECREATION MASTER PLAN

General City-wide Park Recommendations Relative to Singing Wind Park:

- Upgrade playgrounds (shade, accessibility for all, safety, etc.)
- Tree planting; native landscaping
- Add more dog parks
- Add Wi-Fi, security cameras, recycling stations, etc.
- Develop alternative modes of travel to parks
- Improve connection of neighborhoods to parks
- Improve storm water runoff / erosion through best management practices

2022 PARKS AND RECREATION MASTER PLAN

Other Master Plan Coordination, Develop Concepts, and Implementation Approach

2022 Parks & Recreation Master Plan

Kerrville 2050

Olympic Pool Feasibility Study

Develop Alternative ***Themed Concepts*** for Public Review / Prioritization

Prepare Scope, Cost Estimates, Phasing