

# RIVER AND CITY

## INTERACTIONS BETWEEN KERRVILLE AND GUADALUPE RIVER

### OVERVIEW

The Guadalupe River links Hunt, Ingram, Kerrville, and Center Point and then travels east to Comfort in Kendall County. This linkage has an impact on commercial and agricultural activity as well as water availability and quality. Heavy rainfall in the upper Guadalupe River watershed can have flood impact on all of these communities.

### DID YOU KNOW?

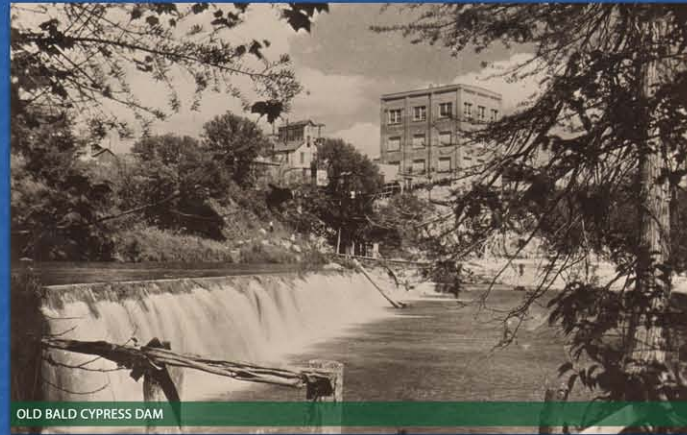
The hilltops on both sides of the Guadalupe River can be as much as 300 feet higher than the river level. Elevation change and large areas of impervious surfaces can cause rapid drainage to the river. *Be aware of flood alerts and warnings.*

### KERRVILLE DEVELOPMENT

The site of the first settlement in the area, Joshua Brown's shingle-making camp, was on the top of the north bluff of the Guadalupe River near what is now downtown Kerrville. By the end of the 1800's, Kerrville had developed into a small, vibrant community. The river supplied power for grist mills and saw mills, and later generated electric power. Today the Guadalupe River is the major water supply for Kerrville and communities along it. Since building structures in floodplains is restricted, several parks, including the Kerrville River Trail, have been developed along the banks of the Guadalupe River for public enjoyment.



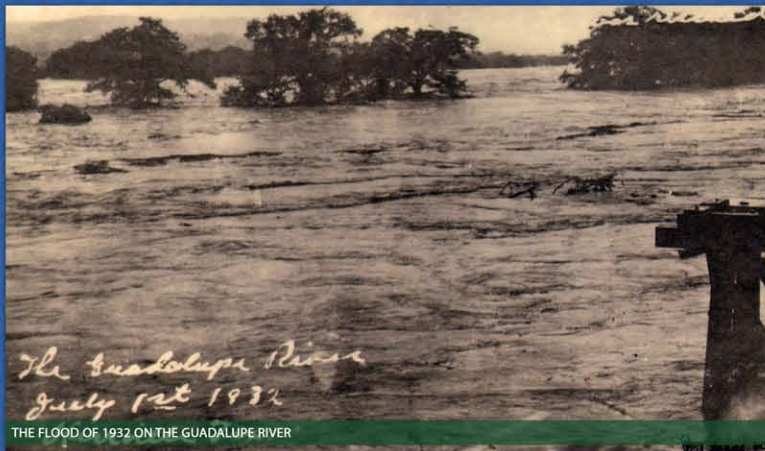
INDUSTRY BY THE WATER



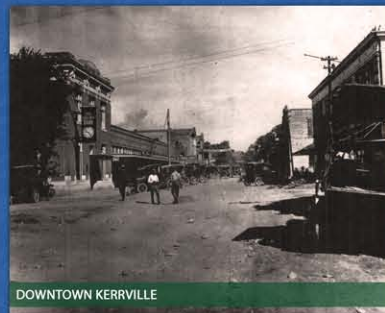
OLD BALD CYPRESS DAM

### THE FLOOD OF 1932

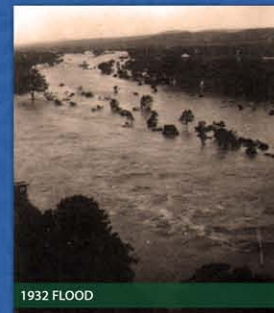
The July 1932 flood is the "flood of record" in Kerrville and crested at 39 feet above normal river level. Most of the city was built on the elevated northern side of the river and the floodwaters spread across the floodplain on the southern side. Major damage was limited. In 1978, another large flood rose to crest just under the Sidney Baker Bridge.



THE FLOOD OF 1932 ON THE GUADALUPE RIVER



DOWNTOWN KERRVILLE



1932 FLOOD