

# TOWN CREEK OVERLOOK

## TRIBUTARY FLOWING INTO THE GUADALUPE RIVER

### OVERVIEW

This overlook is near the **confluence** of Town Creek and the Guadalupe River, or the place where the two bodies of water meet. You are standing about 25 feet above Town Creek.

### DID YOU KNOW?

Red-shouldered Hawks return to the same nest year after year. One pair of hawks returned to the same nest for 16 consecutive years.

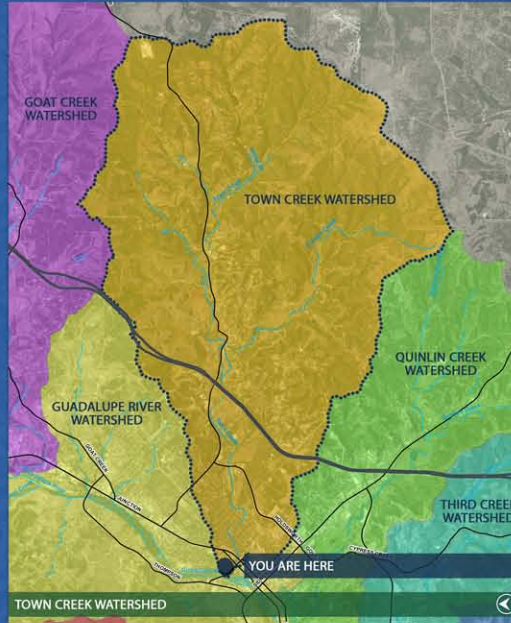
### OUR WATERSHED

Town Creek is a large urban watershed draining 15,000 acres in both Kerr and Gillespie counties. The creek, which is part of the Guadalupe River basin, starts 9 miles upstream north of Kerrville at an elevation of 2,275 feet above sea level and drops to 1,603 feet above sea level as it enters the Guadalupe River.

A **watershed** is land that drains to a common low area such as a creek or river. It follows the natural topography of the earth and can cross cities, counties, and states.

### OPEN YOUR EYES

Many different birds live alongside the creek bank, which provides a rich and diverse habitat for them. You may see Red-shouldered Hawks, Black-chinned Hummingbirds, or even the Green Kingfishers. Keep your eyes open as you walk the trail. Listen for songbirds.



"A bird is three things:  
Feathers, flight and song,  
And feathers are the least  
of these."

Marjorie Allen Seiffert



SNOWY EGRET



CAROLINA CHICKADEE



GREEN KINGFISHER

IMAGE SOURCE: Rene Hillwaert



RED-SHOULDERED HAWK



YELLOW-CROWNED NIGHT HERON



NORTHERN CARDINAL